



SUCCESS AHEAD



The Rehabilitation Division of Nevada's Department of Employment, Training & Rehabilitation

is committed to assisting people with disabilities in meeting their vocational goals, including high school students. Vocational Rehabilitation has programs especially for high school aged students with disabilities to help them progress from school to work by helping them discover their talents and develop new skills.

SERVICE LOCATIONS

For more information about Vocational Rehabilitation Pre-Employment Services call one of these locations or visit VRNevada.nv.gov

TOLL FREE

Las Vegas area	(800) 781-8387
Reno area	(800) 338-6185
Rural area	(800) 491-3813

NEVADA RELAY 711 OR (800) 326-6868

TTY 702-486-0384

If you experience difficulty navigating the Vocational Rehabilitation system, the Client Assistance Program (CAP) can help by explaining services more clearly, investigating your concerns and assisting you if you decide to appeal a decision made during the process. **To contact CAP, call 1-888-349-3843 in southern Nevada or 1-800-992-5715 in northern Nevada.**

Vocational Rehabilitation is an Equal Employment Opportunity program/service. Auxiliary aids and services are available upon request during consultations with counselors and service providers.

Funding Disclosure

Funding from US Dept. of Education – For Nevada Vocational Rehabilitation (VR), For VR: Federal VR grant paid 78.7% of costs. In FFY2023, Nevada VR received \$19,940,576 in Federal VR funds. Non-Federal funds paid 21.3% of costs (\$5,397,298) For Supported Employment (SE), Federal grant paid 95% of costs. In FFY2023, Nevada VR received \$26,235 in Federal SE funds. Non-Federal funds sources paid 5% (\$2,161) of costs.



ONE NEVADA - Growing a Skilled, Diverse Workforce

vrnevada.nv.gov



Nevada

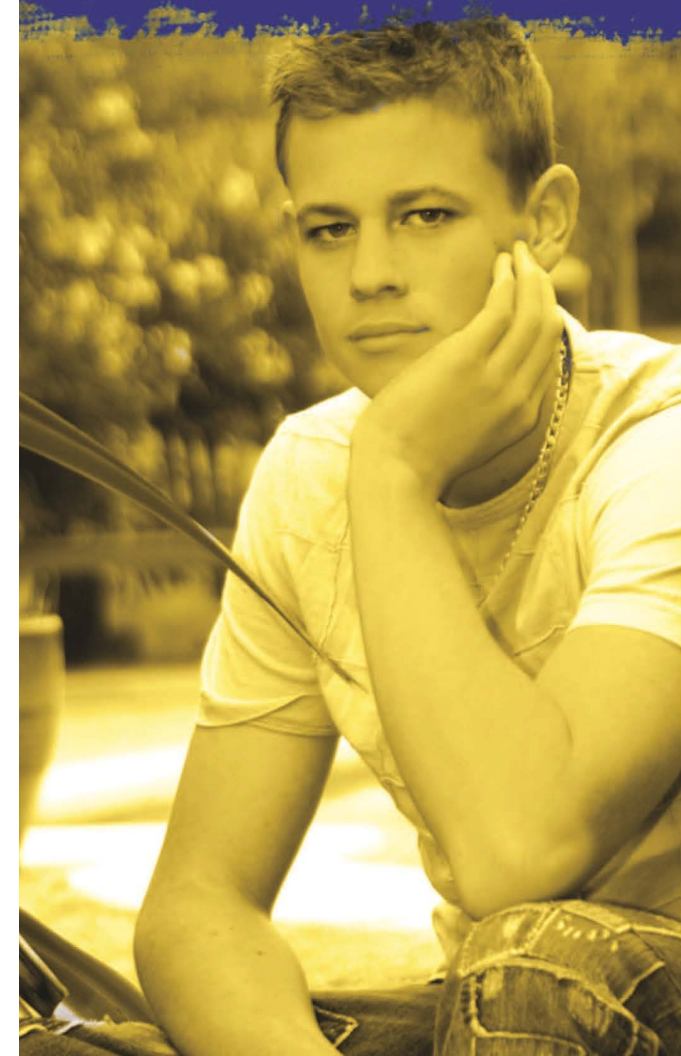
Vocational Rehabilitation

A Proud Partner of American Job Center of Nevada

At Work for Disability Inclusion

PRE-EMPLOYMENT SERVICES

Plan your future now



School to work pre-employment services are designed to help students with disabilities develop and pursue their career goals after high school. The Pre-Employment program is completely confidential and is a team effort involving school staff, Vocational Rehabilitation counselors, parents, and the student. Participation by parents, guardians, or family members is very important. Until the student is 18 years old or has been declared an emancipated youth, parents or legal guardians must sign a consent form for services.

PRE-EMPLOYMENT SERVICES

WHO IS ELIGIBLE?

Vocational rehabilitation services are available to students in high school who have a disability that results in a substantial barrier to employment, not just those who take special education classes. Eligibility may be determined within 60 days.

WHAT DO VOCATIONAL REHABILITATION COUNSELORS DO?

Vocational Rehabilitation counselors are certified and trained to assist individuals with disabilities in exploring different careers and jobs that best match their strengths, abilities, interests, and the job market. Counselors work with the student to develop an individualized plan for employment, which lays out the services needed to achieve the employment goal. Counselors make regular visits to school campuses to conduct orientations for newly referred students, and to meet with those students who currently receive pre-employment services.



SERVICES PROVIDED BY VOCATIONAL REHABILITATION

SERVICES ARE INDIVIDUALIZED AND MAY INCLUDE:

- Assessments to determine job-related skills and abilities
- Assistance with college or trade school education
- Assistive technology
- Career counseling and guidance
- Collaboration with school district staff to assist in pre-employment planning
- Job placement services
- Job retention services such as assistive technology, job coaching and or follow-along
- Other services needed to achieve employment
- Pre-Employment Services to include Work-Based Learning Opportunities

Not all services are applicable to all students.

WHO WILL MAKE THE DECISIONS ABOUT MY VOCATIONAL REHABILITATION PROGRAM?

Vocational Rehabilitation will provide individuals with information they need to make an informed choice throughout the program about employment goals, services and service providers.

IS THERE A COST FOR SERVICES?

After eligibility is determined, the student's family resources are considered before Vocational Rehabilitation agrees to pay all or a portion of the costs for services. Students who have adequate financial support may be asked to share in the cost of services. Students receiving Social Security Insurance (SSI) or Social Security Disability Insurance (SSDI) are exempt from cost sharing.

WHEN SHOULD A STUDENT START THE VOCATIONAL REHABILITATION PROGRAM?

Anytime during the last two years of high school would be a good time to start. Students may apply directly to Vocational Rehabilitation or students or may be referred from a school district pre-employment specialist, teacher, counselor, their parents.

